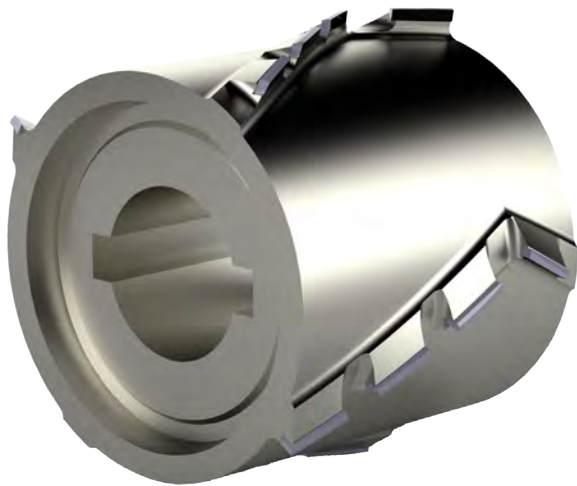


Fresa asimmetrica a finire per macchine bordatrici

Jointing cutter asymmetric for edge-banding machines.

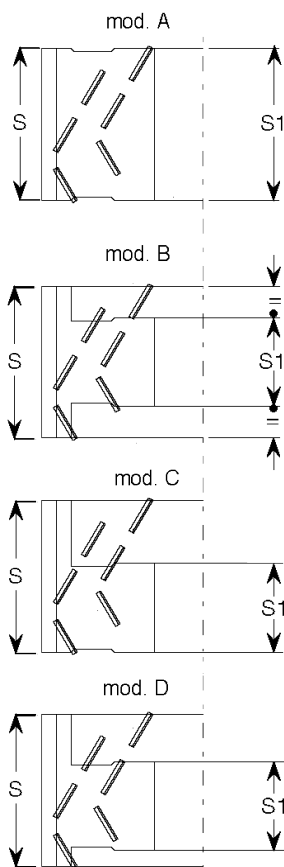


2 PRINCIPI DI TAGLIO

ØD	S	Z	Foro	Codice
100	38	10	30+2CH	AS31.100.38.2.R/L
100	46	12	30+2CH	AS31.100.46.2.R/L
100	53	14	30+2CH	AS31.100.53.2.R/L
100	61	16	30+2CH	AS31.100.61.2.R/L
100	68	18	30+2CH	AS31.100.68.2.R/L

3 PRINCIPI DI TAGLIO

80	68	27	30+2CH	AS31.080.68.3.R/L
100	38	15	30+2CH	AS31.100.38.3.R/L
100	46	18	30+2CH	AS31.100.46.3.R/L
100	53	21	30+2CH	AS31.100.53.3.R/L
100	61	24	30+2CH	AS31.100.61.3.R/L
100	68	27	30+2CH	AS31.100.68.3.R/L
125	38	15	30+2CH	AS31.125.38.3.R/L
125	46	18	30+2CH	AS31.125.46.3.R/L
125	53	21	30+2CH	AS31.125.53.3.R/L
125	61	24	30+2CH	AS31.125.61.3.R/L
125	68	27	30+2CH	AS31.125.68.3.R/L



Caratteristiche

Fresa per spianare a spessore costante per macchine bordatrici. Altezza diamante 2.5 mm.

Characteristics

Cutterhead with constant thickness for edge-banding machines. Diamond height 2.5 mm.